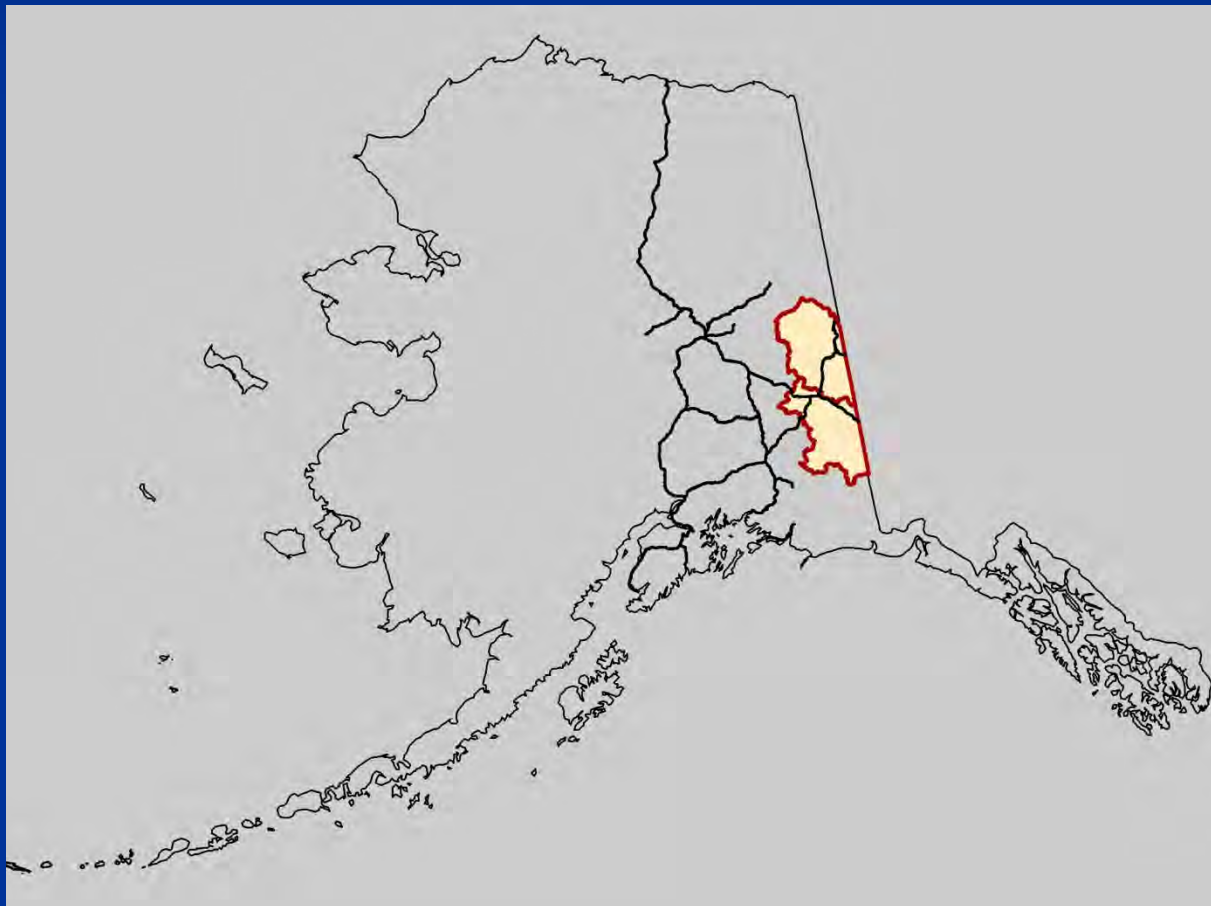




Tok ADF&G Wildlife Program - 2017



Tok ADF&G Office and Staff

Jeff Gross



Bob Gingue



Jeff Wells



Tess Faulise



Downtown
Tok (-73° F)



Tok Area

- Diverse Habitat
- Diverse Land Ownership
- 13 Communities
- 3 ACs



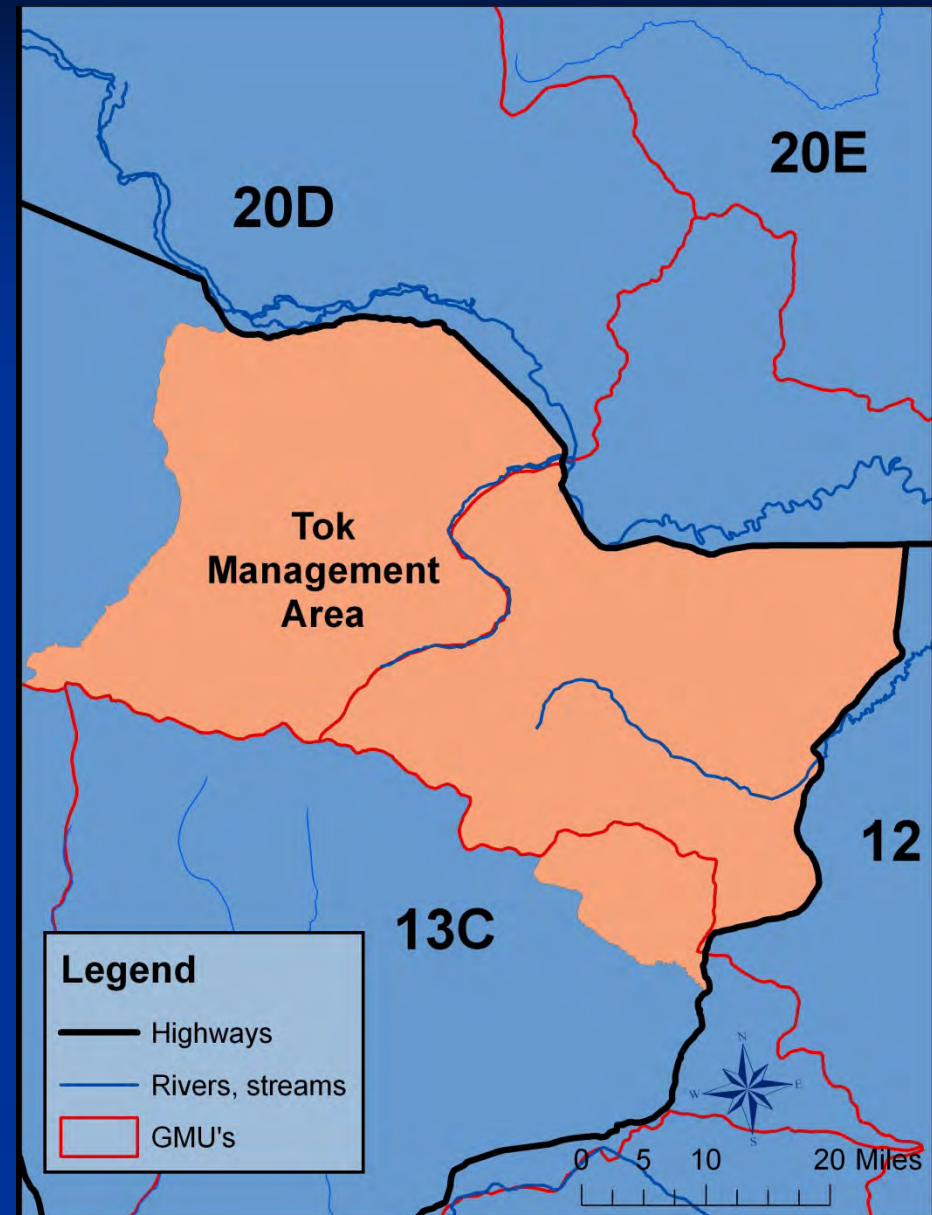
Controlled Use Areas (CUA)

- **Glacier Mountain CUA (Unit 20E)**
- **Ladue River CUA (Unit 20E)**

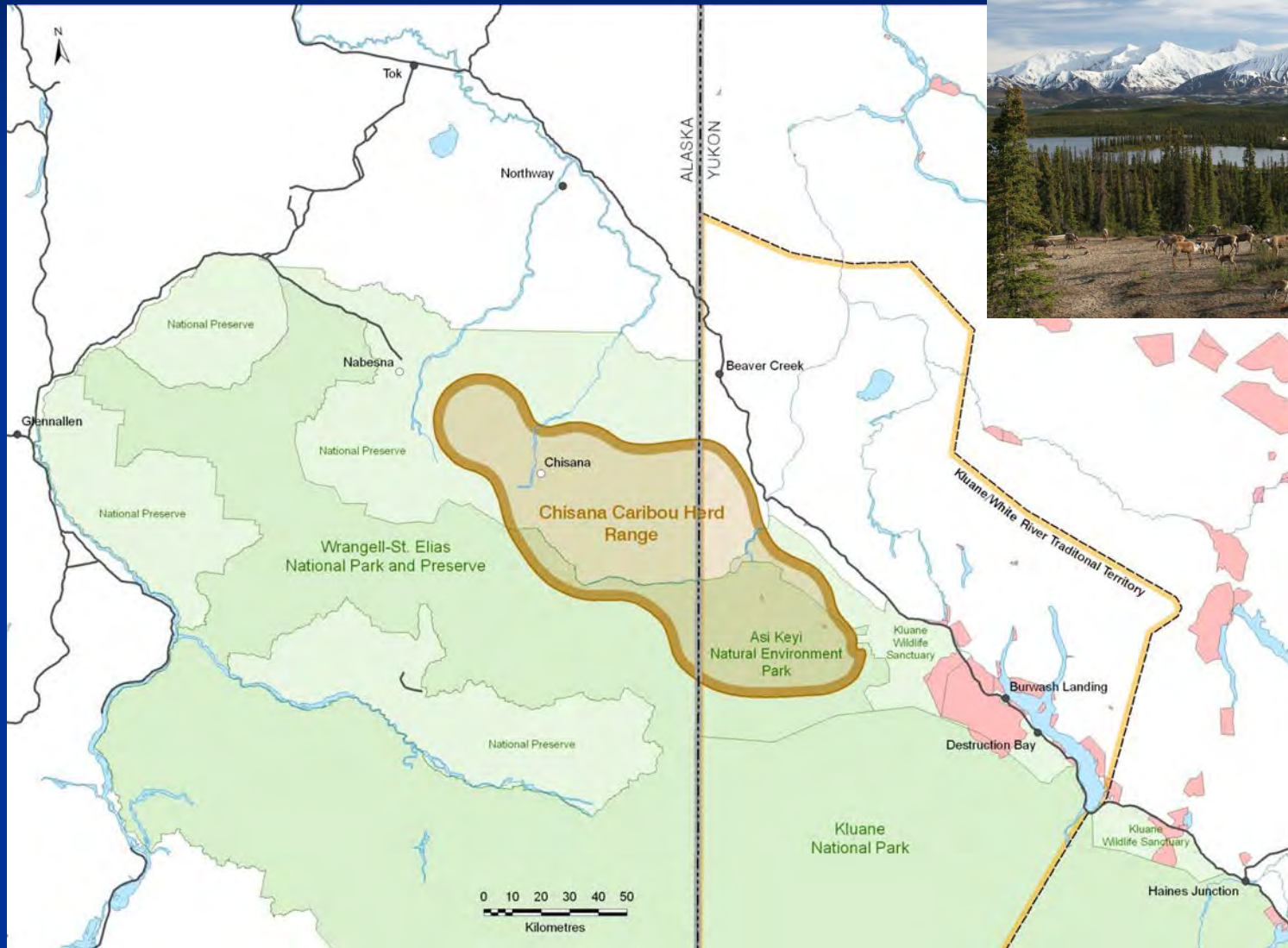


Management Areas

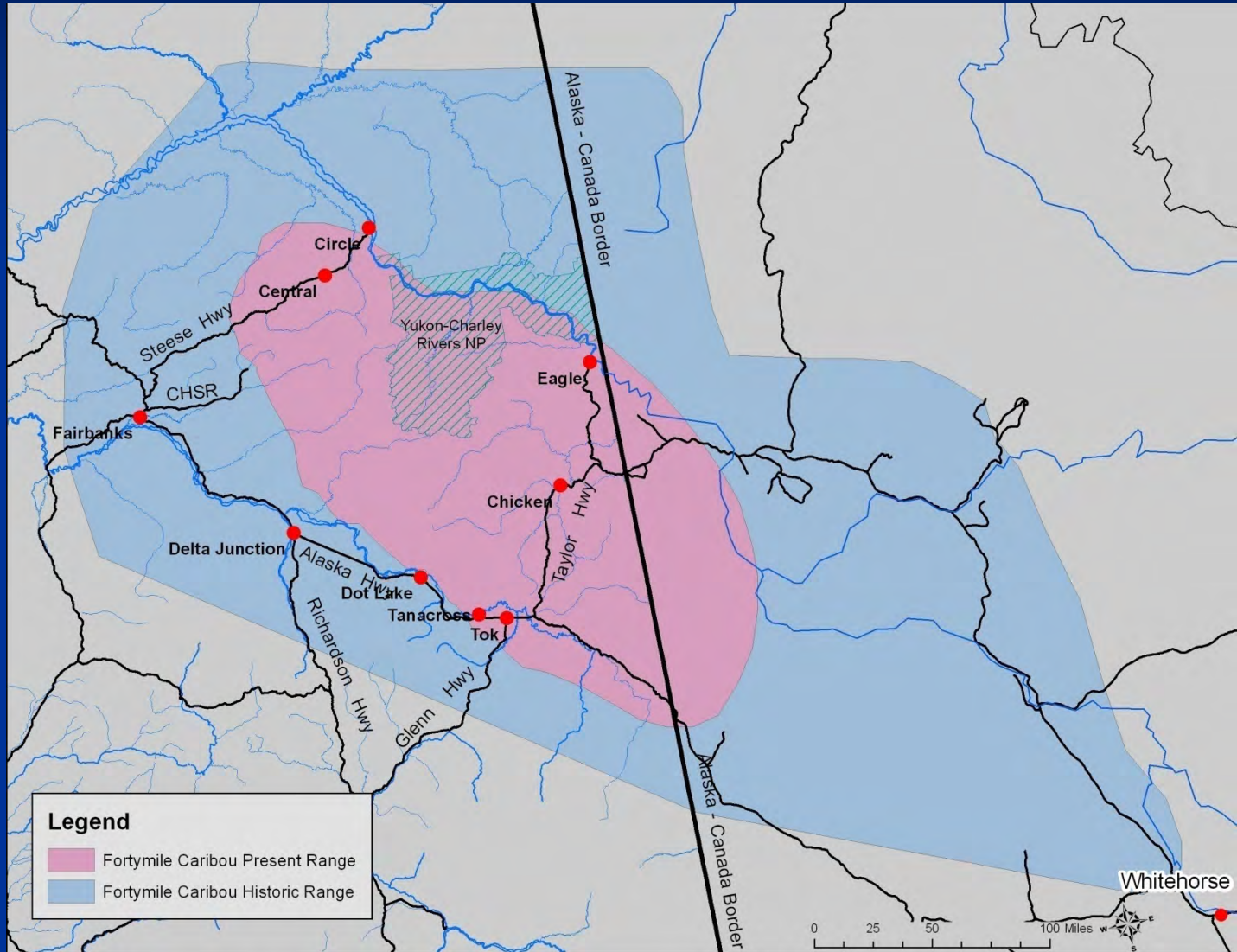
- **Tok Management Area (Unit 12)**
 - Trophy Sheep Management
 - Uncrowded Hunting Conditions



Caribou – Chisana Herd



Caribou – Fortymile Herd



Caribou – Fortymile Herd

High Levels of Human Use

Intensive Management Objectives

- **Population 50,000 – 100,000**
- **Harvest 1,000 – 15,000**

Harvest guided by 2012-2018 Harvest Management Plan

Caribou – Fortymile Herd

Current Population Est.

- 51,675 caribou (2010)
- Increasing

Management Activities

- Photo Census
- Fall Comp
- Spring Birthrate
- Harvest Monitoring



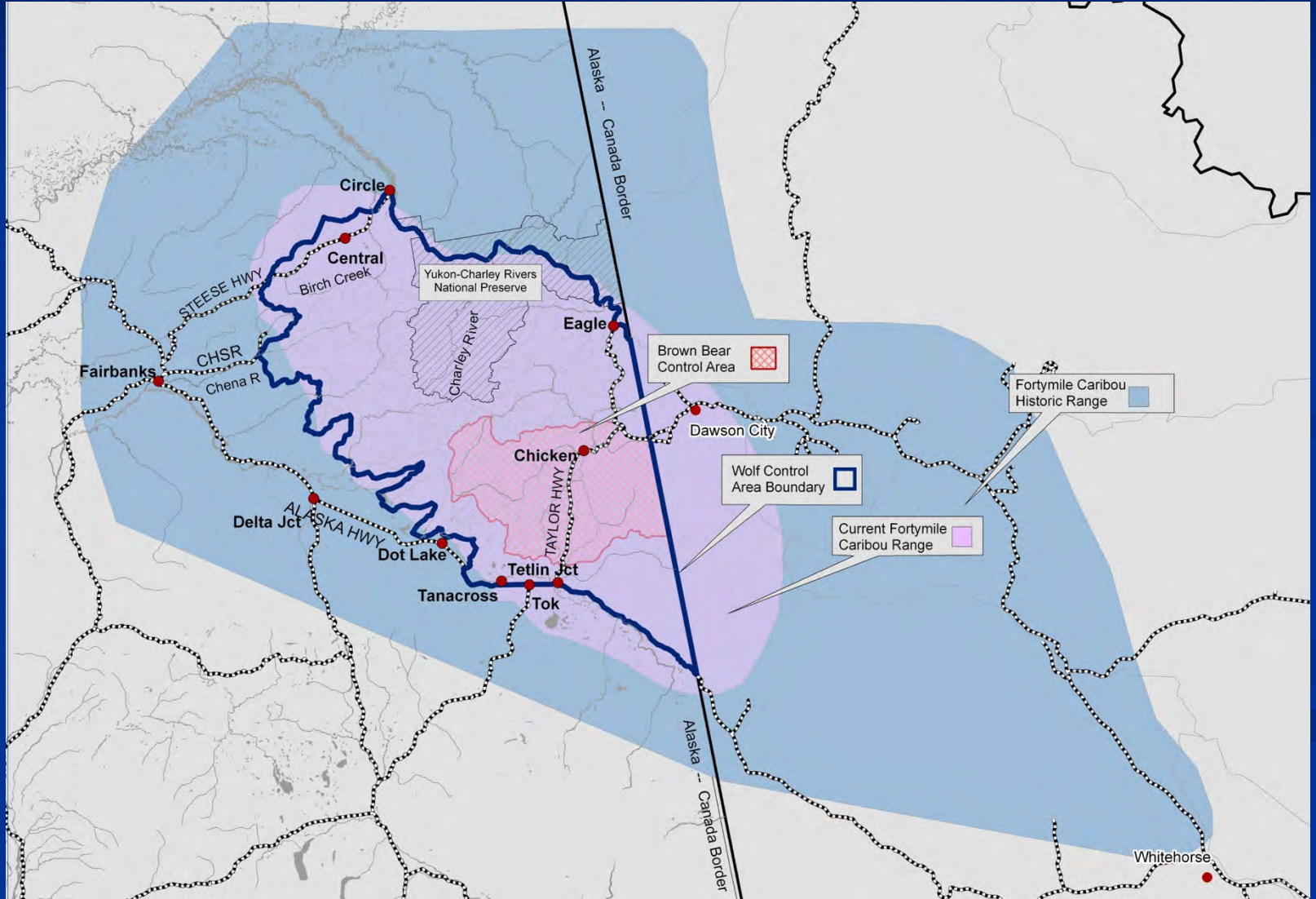
Caribou – Fortymile Herd

Harvest

- Fall and Winter **Registration Hunts**
 - ~**2,500–3,500** Hunters Annually
 - RY12 and RY13 Quota of **1000 Caribou**
 - season and area allocation



Caribou – Fortymile Herd

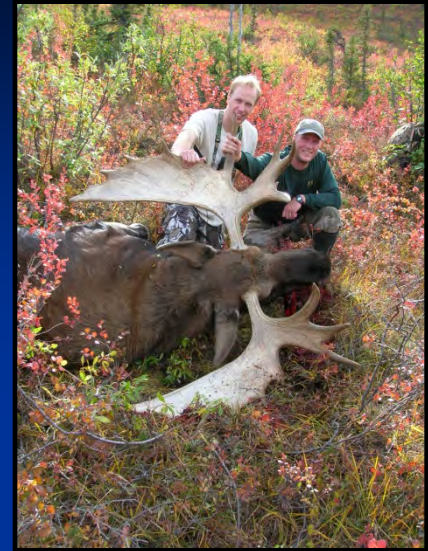


Moose – Unit 12

High Levels of Human Use

Intensive Management Objectives

- Population 4,000 – 6,000
- Harvest 250 – 450



Current Population Estimate = 4,500-6,400

2002-2013 Harvest = 125 (avg.)

2014-2015 Harvest Increased = 166 (avg.)

Unit 12 that portion in the Tok River drainage upstream from the Tok River bridge, including the Little Tok River drainage:

**Resident: 24-28 Aug
8-17 Sept**

1 bull with spike-fork or 50" antlers or antlers with 4 or more brow tines on at least one side

Nonresident: 8-17 Sept

1 bull with 50" antlers or antlers with 4 or more brow tines on at least one side

Remainder of Unit 12:

**Resident: 24-28 Aug 1bull
8-17 Sept 1bull**

**Nonresident: 8-17
1 bull with 50" antlers of antlers with 4 or more brow tines on at least one side**

Unit 12 that portion within the Nebesna River drainage west of the east bank of the Nebesna River upstream from the southern boundary of the Tetlin NWR (RM291):

Resident: 20 Aug - 17 Sept

1 bull with spike-fork or 50" antlers or antlers with 3 or more brow tines on at least one side

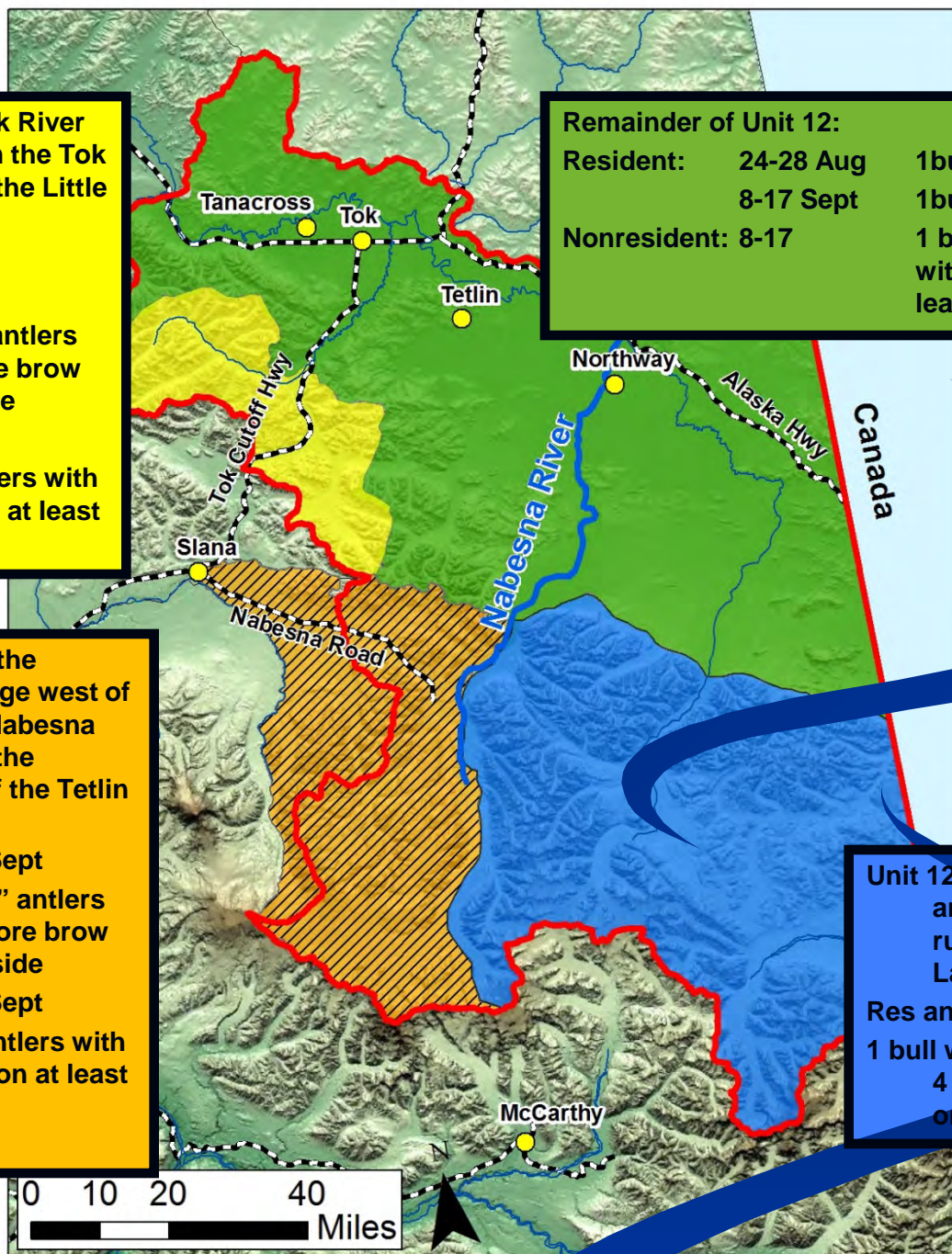
Nonresident: 20 Aug - 17 Sept

1 bull with 50" antlers or antlers with 3 or more brow tines on at least one side

Unit 12 east of the Nebesna River and south of the winter trail running southeast from Pickerel Lake to the Canadian border:

Res and NRes: 1-30 Sept

1 bull with 50" antlers or antlers with 4 or more brow tines on at least one side



0 10 20 40
Miles

Moose – Unit 12

Management Activities

- Population surveys
- Twinning counts
- Periodic browse surveys
- Harvest Monitoring
 - General Harvest Reports

Moose – Unit 20E

High Levels of Human Use

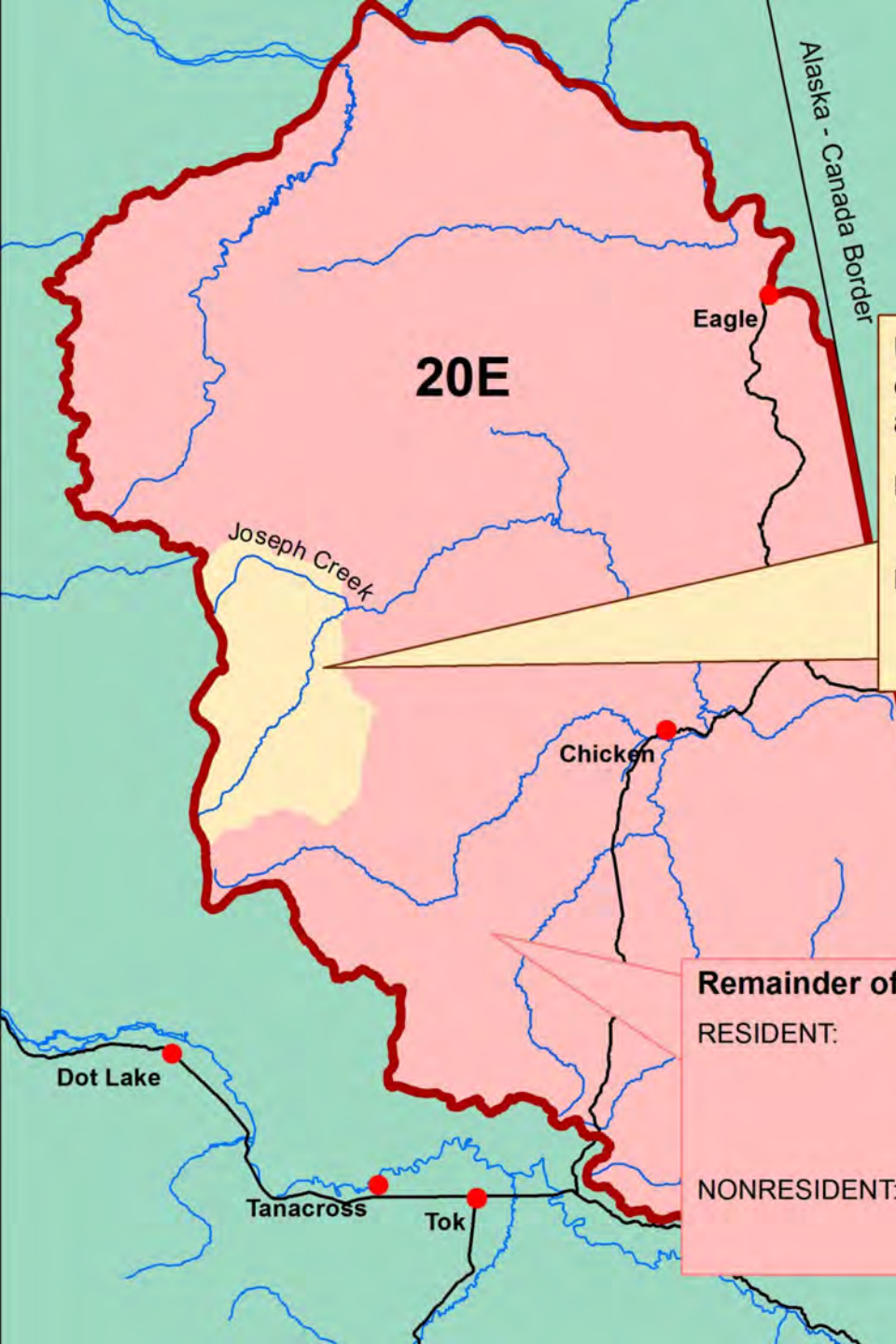
Intensive Management Objectives

- Population 8,000 – 10,000
- Harvest 500 – 1,000

Current Population Estimate = 5,200 – 7,400

2011-2013 Harvest = 170 (avg.)

2014-2016 Increased = 234 (avg.)



Unit 20E drainages of the Middle Fork of the Fortymile River upstream from and including the Joseph Creek drainage:

RESIDENT:	24-28 August	1 bull
	8-17 September	1 bull
NONRESIDENT:	8-17 September	1 bull with 50-inch antlers or antlers with from and including the 4 or more brow tines on at least one side.

Remainder of Unit 20E:

RESIDENT:	Registration	24-28 August	1 bull by permit RM865
	Registration	8-17 September	1 bull by permit RM865
	Drawing	1 Nov.- 10 Dec.	or 1 bull by permit DM 794 - DM796 in the Ladue River Controlled Use Area
NONRESIDENT:	Registration	8-17 September	1 bull with 50-inch antlers or antlers with 4 or more brow tines on at least one side by permit RM865

Moose – Unit 20E

Management Activities

- Population surveys
- Twinning counts
- Periodic browse surveys
- Harvest Monitoring
 - Registration Harvest Reports

Wolves

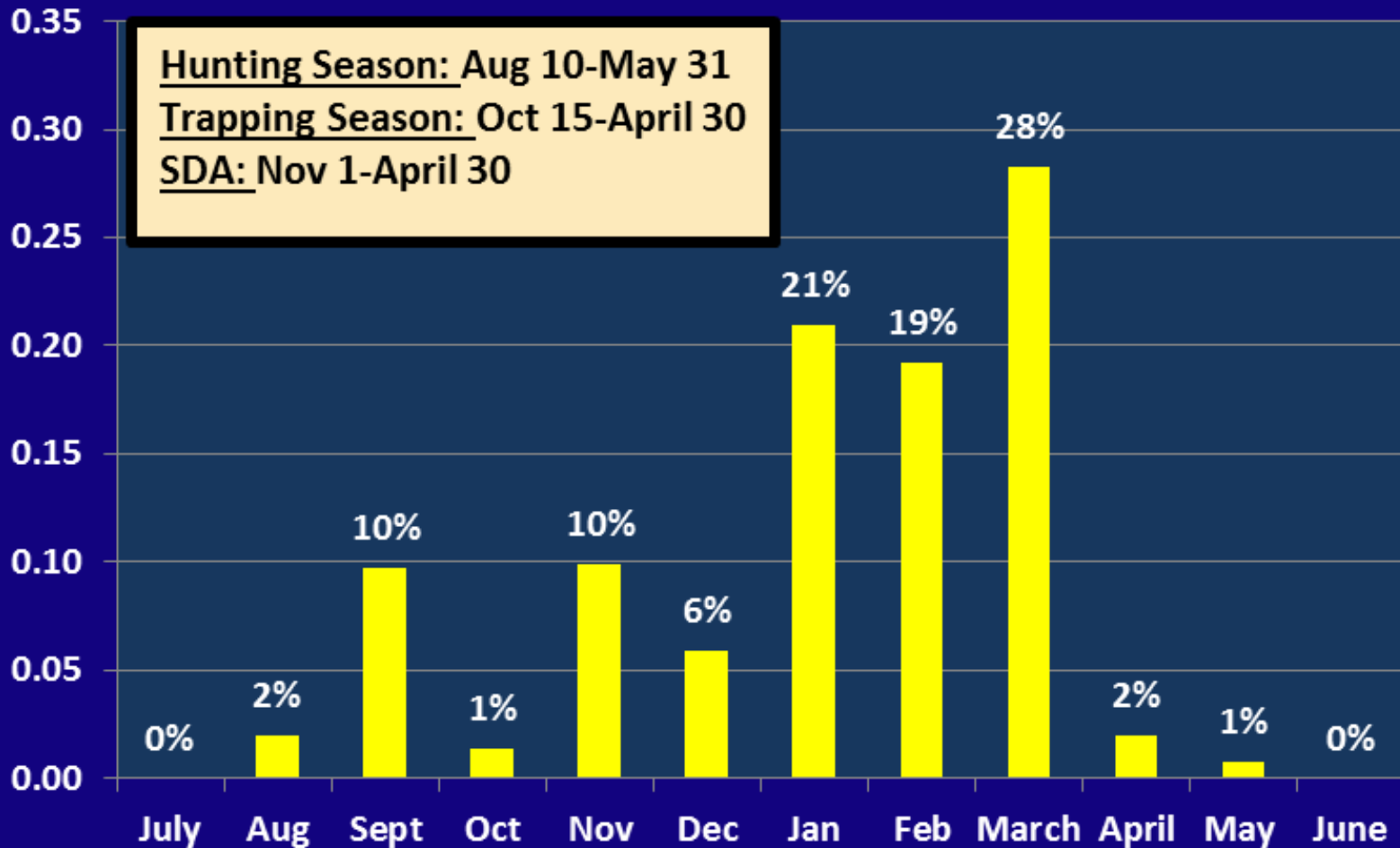
Units 12 and 20E

- High densities
- Primary management related to Wolf Control Program



Wolves - Units 12 and 20E

Harvest % by Month (2011-2015)



Grizzly Bears

Units 12 and 20E

- Relatively high densities
- Baiting allowed since RY12

Harvest (avg. since RY12)

- Unit 12 – **25** bears/year
 - **6/yr** (avg) over bait
- Unit 20E – **18** bears/year
 - **3/yr** (avg) over bait
- Sustainable Levels



Black Bears



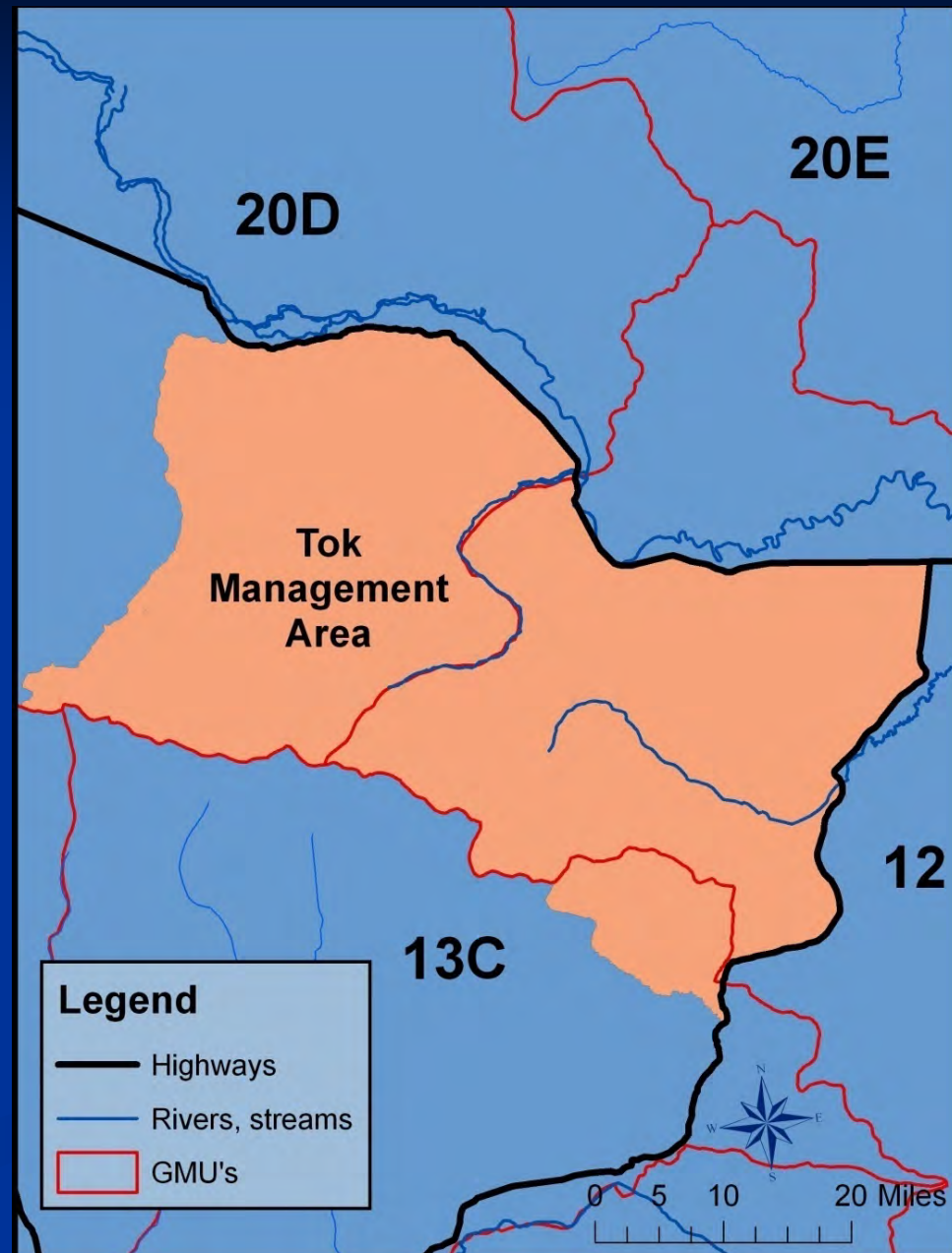
Sheep

Tok Management Area

- 61 Permits (RY14-16)
- 18-27 Rams (RY14-16)
- 81 Permits (RY17)

Mt. Harper Permit Hunt

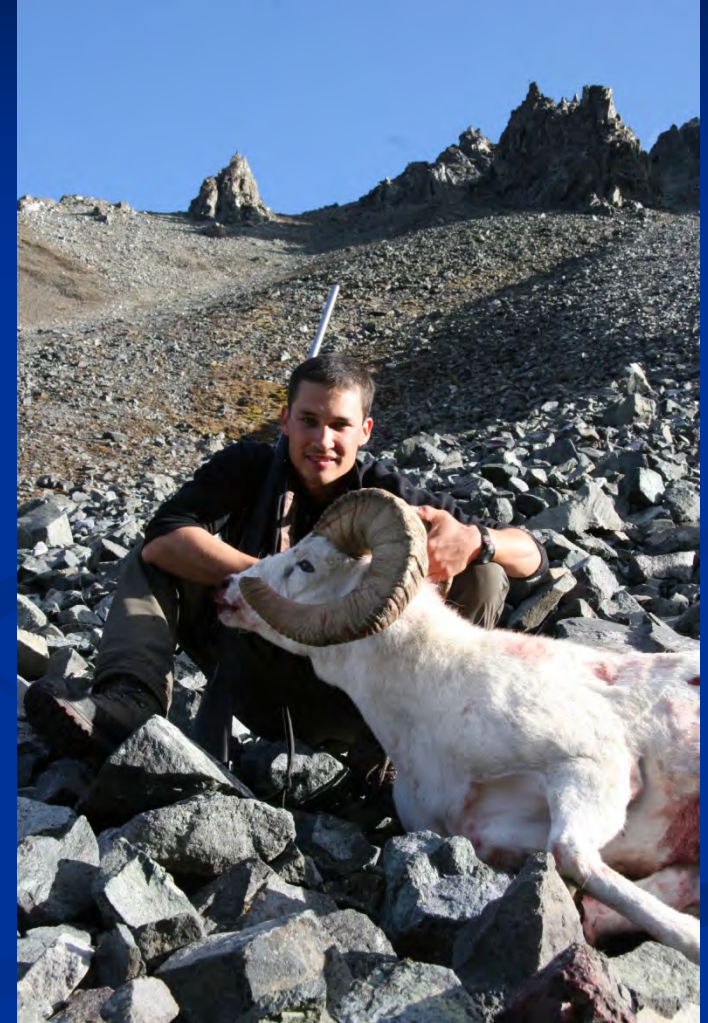
- 4 Permits
- 0-2 Rams Annually



Sheep

Management Activities

- Annual Survey –TMA
- Periodic Surveys
 - Unit 12 – N. Wrangell Mts.
 - Unit 20E – Tanana Hills
- Seal ~40-60 Rams/Year



Furbearers



Small Game

